

Advancing Adolescents Approach

Resilience to Keep Adolescents Safe, Learning and Valued
Lebanon, Jordan & Syria

October 8, 2014



The intention for the Busma (Lebanon) and Nubader (Jordan) Programs under the No Lost Generation strategy between Jordan, Lebanon and Syria is that we have similar models, logframes and monitoring & evaluation processes. The intention is to be able to scale-up this model in a variety of countries rapidly.

The core values for the Advancing Adolescents Approach is based on profound stress, attachment and social cohesion frameworks.

What is Special about the Program?

What is the program about? Jordan and Lebanon Context

The Busma and Nubader program (part of the No Lost Generation campaign) targets the most vulnerable and isolated refugee and host community adolescents between the ages of 13-17 and aims to help them reconnect to themselves, their families and community; as well as empowering them to take the lead in making positive changes by implementing social cohesion projects in their communities. This program targets young people who are difficult to reach, and who traditionally are not connected to a service, those who are subject to exploitative labor, have restricted movement, suffer from abuse or other forms of violence, and/or have had trouble with the law. The program aims to strengthen the resilience of young people to cope with the stresses in their life and to re strengthen empathy to others in order to lead them on a positive trajectory for their future. It will enable young people to master practical skills essential to leading healthy lives, plan short term and long term goals that help them to map a pathway towards becoming a leader that promotes change in themselves, their families and communities.

The program will be implemented in urban areas where the rates of social conflict are escalating or have the potential to escalate, where the culture of drugs and alcohol abuse is increasing and where young people are at high risk because of post release detention. It will highlight necessary skills that will generate greater resilience for the young people including practical skills for economic resilience in the home and in the future. It will also incorporate activities that endorse social cohesion between individuals, different genders, communities and nationalities. The Busma and Nubader programming will be developed from a *Profound Stress* framework.¹

Program Sustainability – Jordan and Lebanon Context

One of the most fundamental ideologies of the program is for it to be sustainable in the communities in which the Busma and Nubader program is implemented. Partner community based organizations (CBOs) will be identified in the communities to become safe hubs that attract young people and their families from different backgrounds to activities that will be led by trained local coaches. The CBO will become a community center and will foster positive and enriching interactions between community members. CBOs that run small scale soft psycho-social skills will be supported to be rehabilitated and in some instances helped to refurbish, and empowered to carry out intensive outreach and programing to vulnerable adolescents. Mercy Corps Project staff will build the capacity of coaches and mentors from the identified communities and CBOs, and will utilize expertise from the community to support programming that is based on experiential and cooperative learning methodologies.

In cooperation with national Jordanian universities, mentors from the communities will be trained on the fundamentals of providing one – on – one mentoring with the youth to support

¹ Please refer to UNICEF's "Strategic Overview – No Lost Generation: Protecting the futures of children affected by the crises in Syria"

further their resilience and coping strategies. The mentors will closely support the most vulnerable youth for 6-9 months, and will also target mentoring post-release adolescents.

Community resilience strategies and sustainable exit strategies are part of holistic programing and will ensure the potential for each community center to carry on programing with a level of expertise.

Furthermore, young people, community leaders, elders, and recognized safe people from the community will be recruited to form Community Based Protection Networks (CBPN) which will form the first response mechanism for child protection concerns in these isolated communities, and which will continue its mission even after the completion of the project.

GBV – Jordan & Lebanon Context

The Busma and Nubader project framework ensures gender sensitive issues are incorporated in the program. By building the capacity of the team, CBPN, CBOs, coaches and mentors in Gender & GBV, the program aims to influence change in the traditional perception of young people re gender based issues in the community, and through the CBPN respond as well as prevent gender-based violence. On a micro level, the Busma and Nubader team is tailoring activities in ways that target the same number of boys and girls and scheduling the activities at hours that are suitable for both groups. It is expected that CBO community centers will be open from 9 am to 9pm The activities will be planned specifically around the different needs and priorities for boys and girls, including women's and men's access to the resources necessary as identified in the situational assessment. Consequently, building an integrated team that views the world through a 'gender lens' to help young people better manage the feelings of injustice and anger that commonly result from exposure to conflict and displacement in host communities.

Experience to Adventure – Jordan Context

The Nubader program highlights the importance of acquiring youth leadership skills that will enable them to adopt a proactive role in their communities, and lead on the path of change on an individual level and on a societal level. Through hiring an outdoor expert, the program will design physical challenge by choice activities that aim to release negative emotions, elevate healthy cortisol hormone levels, increase social capital between young people, and augment their problem solving skills. The activities will include hiking, rock climbing, abseiling and camping which in return will focus on experiential learning which is linked to physical challenges, teambuilding, building trust between the group members and enhancing their communication skills. By experiencing nature, the youth will reconnect to their bodies, and will build trust of themselves and of others; building resilience.



ADVANCING ADOLESCENTS APPROACH

RESILIENCE TO KEEP ADOLESCENTS
SAFE, LEARNING AND VALUED

PART OF NO LOST GENERATION CAMPAIGN

COMMUNITY COACHES & MENTORS

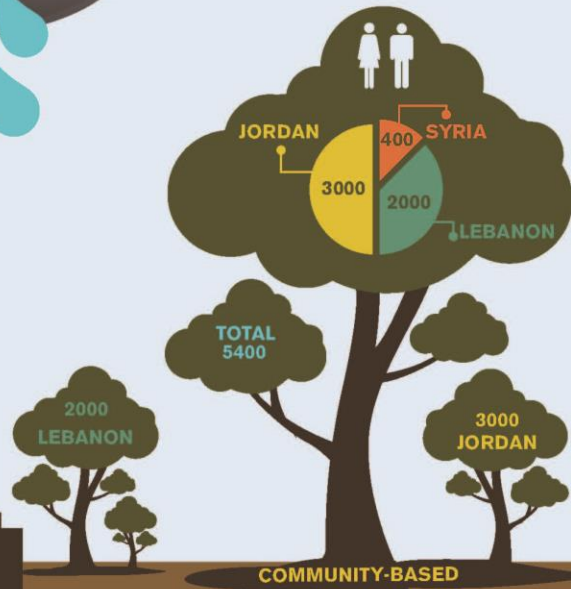
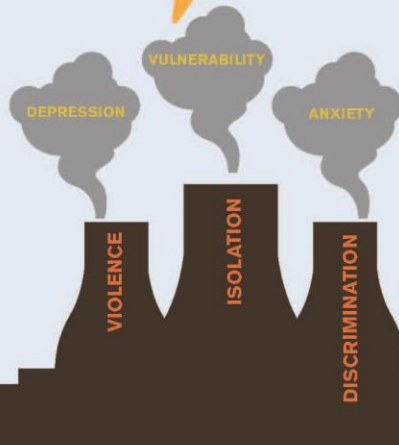
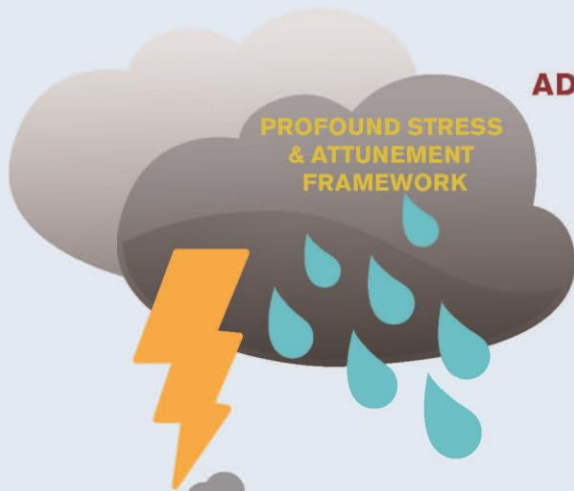
- 8 WEEK CURRICULAR STRAND FOR THE MOST VULNERABLE ADOLESCENTS
- DROP-IN ACTIVITIES FOR ADOLESCENTS & CAREGIVERS
- COMMUNITY ACTIVITIES FOR ALL
- APPLICATION OF GENDER & CONFLICT SENSITIVE APPROACHES

INFORMAL EDUCATION

SKILLS FOR
ECONOMIC
SURVIVAL

ADVOCACY & PEACE BUILDING

LIFE SKILLS PSYCHOSOCIAL AND GOAL PLANNING



COMMUNITY-BASED

PROTECTION
NETWORKS

SOCIAL CAPITAL
FOR YOUNG PEOPLE

SYSTEMS
FOR COMMUNITY BASED
ORGANIZATION

FUNDED BY



SOCIAL COHESION
FOR COMMUNITIES

BUSMA Program in Lebanon

Part of the No Lost Generation Campaign

Strengthening Resilience to Keep Adolescents Safe, Learning and Valued

Mercy Corps Saves and Improves Lives in the World's Toughest Places

Mercy Corps is a leading global humanitarian agency saving and improving lives in the world's toughest places. With a network of experienced professionals in more than 40 countries, we partner with local communities to put bold ideas into action to help people recover, overcome hardship and build better lives — now, and for the future.

Why Focus on Adolescents in the Middle East

Of the 1.2 million Syrian refugee children under the age of 18 living outside of Syria, nearly one in every three are adolescents.² Syrian refugee, Palestinian refugee and host-community Lebanese adolescents ages 13-17 represent a critical cohort yet are among the most underserved in the Syrian crisis response. Yet, there is clear evidence of adolescents' heightened vulnerability to distinct protection violations; neurological predisposition to fear, anxiety and depression, compounded by ongoing violence, exploitation, discrimination, exclusion, isolation, alienation, lack of access to education and daily survival challenges; and susceptibility to risky behaviours and negative choices that can lead to long-term, irreparable or grievous harm to self, family and community.

By investing in adolescents today we help keep them safe from further violence and human rights abuses. We support them to be valued and to give back value. We empower them to serve as catalysts for social cohesion. We link them to community and other protective mechanisms for sustained social capital strengthening.

No Lost Generation Busma (بصمة)

In 2013, Mercy Corps along with UNICEF, Save the Children and World Vision spearheaded the **No Lost Generation** campaign to mitigate the devastating impact of the Syrian crisis in various countries. With the deadly conflict in Syria entering its fourth year, the needs of 5.5 million Syrian refugee and host community adolescents and children in Syria, Lebanon, Jordan, Iraq and Turkey are increasingly complex, dire and urgent.



In Lebanon, Mercy Corps pioneered **Busma (بصمة)** ["fingerprint"] -- an integrated model drawing on proven techniques to address profound stress as the **bedrock for ensuring that more than 1,000 Syrian, Palestinian and Lebanese adolescents** between the ages of 13-17 years old:

- do not fall into despair and hopelessness, and resort to further negative coping practices and high risk behaviours
- get back on track to 'learning' and towards developing practical skills for economic resilience in the home and in the future
- are better protected from various forms of violence and exploitation with direct access to community based protection mechanisms
- are empowered to serve as catalysts for social cohesion in their communities
- can generate the impetus to strategically influence and advocate for concrete reforms.

² UNHCR. *The Future of Syria: Refugee Children in Crisis*.
<http://unhcr.org/FutureOfSyria/>

BUSMA (بصمة)

The Difference that Matters



A CRITICAL TIME

Adolescence is the time to act. Busma capitalizes on this time bound, brief window of opportunity to connect with adolescents and help them make decisions that will positively impact the trajectory of their lives. Busma also connects adolescents to local market industries, municipal government and community resources with the aim of mitigating protection risks; imparting skills for economic resilience in the home and in the future, mobility and security; bonding, bridging and linking social capital; and promoting overall social cohesion.



GENDER & CONFLICT SENSITIVE

Recognizing that gender, violence and conflict affect and impact differently on Syrian, Palestinian and Lebanese adolescent boys and girls, Busma mainstreams a gender and conflict sensitive approach across all interventions.



REACHING THE MOST VULNERABLE

Through engagement with local municipalities, community leaders and local NGOs, as well as strategic targeting utilizing a composite vulnerability and well-being index, Busma ensures that the most vulnerable and marginalized adolescents – and their caregivers as well as community gatekeepers -- are effectively reached through this programme.



ATTUNEMENT | THE BEDROCK

Drawing on profound stress frameworks and attunement techniques, Busma considers this an essential precursor to working with vulnerable Syrian, Palestinian and Lebanese adolescents affected by the crisis. As one method for reducing social aggression, Busma supports promoting empathy and the further development of intellectual, social and emotional well-being – attachment to self, families and communities.



LEARNING

INTEGRATED & PRACTICAL SKILLS

Busma infuses psychosocial support in all soft and hard skill curricula material and instruction. Adolescents have the opportunity to select from a myriad of course offerings within 2 month cycles for a period of 8 weeks. Based on situational assessment findings, *Busma* offers a range of skills trainings that are in high demand within the community and recruits local instructors to act as both instructors and mentors. All courses will allow adolescents to graduate with a certificate in a particular skill.



PROTECTION AGAINST VIOLENCE

Busma provides safe and culturally appropriate spaces where information sessions are conducted to help adolescents identify and report actual or suspected incidences of abuse, exploitation and violence. Adolescents are linked to community-based and caza level networks as resources for sustained protection.



CATALYSTS FOR SOCIAL COHESION

UNTAPPING ADOLESCENTS' POTENTIAL

Busma facilitates linkages between adolescents and caregivers to communities. Skills building strands will feed into social cohesion projects aimed at bringing together Syrian, Palestinian and Lebanese adolescents in order to reduce tensions and promote social cohesion.

CONTACT

Maryam Zohny, Lebanon Program Manager
mzohny@lb.mercycorps.org

Jane MacPhail, Regional Youth Program Director
jmacphail@jo.mercycorps.org

mercy Corps.org/Lebanon

Nubader Program in Jordan

Part of the No Lost Generation Campaign

*Strengthening Resilience to Keep Adolescents
Safe, Learning and Valued*

Mercy Corps Saves and Improves Lives in the World's Toughest Places

Mercy Corps is a leading global humanitarian agency saving and improving lives in the world's toughest places. With a network of experienced professionals in more than 40 countries, we partner with local communities to put bold ideas into action to help people recover, overcome hardship and build better lives - now, and for the future.

No Lost Generation

Mercy Corps, along with UNICEF, Save the Children and World Vision, has joined the **No Lost Generation** campaign to mitigate the devastating impact of the Syria crisis on children. According to UNICEF, 4.65 million children are affected by the crisis inside Syria. An additional one million children have fled as a result of the violence and are now living as refugees in camps and host communities in neighboring countries.

The majority of registered Syrian refugees in Jordan are children under 18, and the burden on the public education system is taking its toll. Overcrowding in schools is affecting education quality and derailing on-going public education reform.

Individuals from Syrian and Jordanian communities are experiencing profound distress caused by conflict and displacement. Violence against children at home and in schools is widespread. Boredom and aggressive behavior is common, especially among boys and youth, potentially heightening the risk of recruitment by armed groups.

Meanwhile, as Syrian refugee families use up their savings, many are forced to send their children to work in dangerous jobs. Child poverty is also increasing for Jordanian children.

Nubader نبادر **"Youth Take Initiative"**

Being part of the No Lost Generation Campaign, **Nubader** is addressing the critical needs of adolescents between the ages of 13-17 years, both Syrians and Jordanians, recognizing they are at a pivotal point in their life - between hope or hopelessness, positive change or negative influence, and possibility or despair.

The program targets vulnerable adolescent Syrian refugees and host community peers in Mafraq, Irbid, Jerash and Ajloun to develop their knowledge, life skills and ability to collaboratively pursue personal and community development goals. Our activities will:

- Improve their **psychosocial well-being**;
- Enhance their ability to identify and develop plans to pursue **short-term goals**, as well as learn **applied life skills**; and
- Increase **social cohesion** between Syrians and their host communities.



Mercy Corps' programming supports vulnerable children and youth. Photo: Mercy Corps' Communication Team



REACHING THE MOST VULNERABLE

According to predefined criteria and through engagement with local municipalities, community leaders and local NGOs, Nubader is aiming to reach the most vulnerable Syrian and Jordanian youth. Additionally, outreach to parents and/or **care givers** of adolescents will be key to address barriers to participation. Activities will include community-level meetings and consultations, such as awareness and resources available to parents.



ATTUNEMENT | THE BEDROCK

Drawing on profound stress frameworks and attunement techniques, Nubader considers this an essential precursor to working with vulnerable Syrian and Jordanian adolescents affected by the crisis. As one method for reducing social aggression, Nubader supports promoting empathy and the further development of intellectual, social and emotional well-being – attachment to self, families and communities.



DEVELOPING PRACTICAL ECONOMIC RESILIENCE SKILLS IN THE HOME

AND IN THE FUTURE

Adolescents will participate in **life-skills** and **short-term goal setting** and **planning** sessions. These activities will expose adolescents to different opportunities and possibilities as they begin to think about and plan for their future. Adolescents have the opportunity to select from a myriad of course offerings within 2 month cycles. All courses will allow adolescents to graduate with a certificate in a particular skill.

Supplemental educational sessions will be arranged based on subjects identified as most critical to adolescent participants.



GENDER & CONFLICT SENSITIVE

Recognizing that gender, violence and conflict affect and impact differently on Syrian and Jordanian adolescent boys and girls, Nubader mainstreams a gender and conflict sensitive approach across all interventions.



PROTECTION AGAINST VIOLENCE

Nubader provides safe and culturally appropriate spaces where information sessions are conducted to help adolescents identify and report actual or suspected incidences of abuse, exploitation and violence. Adolescents are linked to community-based and allied networks as resources for sustained protection.



EASING TENSION IN HOST COMMUNITIES

As adolescents identify their short-term goals, develop plans to pursue them, and acquire applied economic resilience skills, Mercy Corps will support groups of youth to identify issues within their community that they have some common interest in wanting to address. Participating adolescents will be encouraged to identify and **implement small service projects** that aid the wider community, helping to **mitigate host-community tensions** and pave the way for wider adolescent participation in community development.

CONTACT

Natasha Shawarib, Project Manager
nshawarib@jo.mercycorps.org

Jane MacPhail, Regional Youth Program Director
jmacphail@jo.mercycorps.org

P.O.Box 830684
Amman 11183
Telephone: + (962) (6) 5548570 / 1 / 2

mercycorps.org/Jordan

The Program Model

